

ELECTRONIC FLIGHT BAG SOLUTIONS

EFB



CARLISLE
INTERCONNECT TECHNOLOGIES

Leader in EFB System Integration

CarlisleIT is an industry leader in EFB system integration with EFB experience dating back to the mid-1990s. CarlisleIT recognized EFB very early on as a major advancement to aviation. Examples of early and continued contributions to the development of superior EFB installation solutions include:

- » Development of high quality five (5) pair DVI / LVDS cable tested at 40+ feet transmission lengths significantly exceeding the typical COTS 15 feet length limit
- » Development of Extended Range USB cables tested by multiple EFB OEMs to perform at 40 feet in length
- » Development of the EZMount® family of display unit mounting devices to support installation in a wide variety of platforms
- » Participation in ARINC 828 Specification meetings
- » CarlisleIT staff member was the industry editor for ARINC 828-1 specification
- » Participation in ARINC EFB Users Forum meetings and events

CarlisleIT completed its first Class I EFB STC installation in 1997 on Southwest Airlines. This system has gone through multiple upgrades and remains in operation today. Currently CarlisleIT holds 18 EFB Installation STCs comprising of over forty configurations resulting in a broad offering of certified EFB installation kit options. CarlisleIT EFB installations and kits are designed for ease of installation, maximum operational safety, and future EFB system expansion to significantly minimize your overall cost of ownership.



EZMount® EFB Display Unit Mounting Provisions

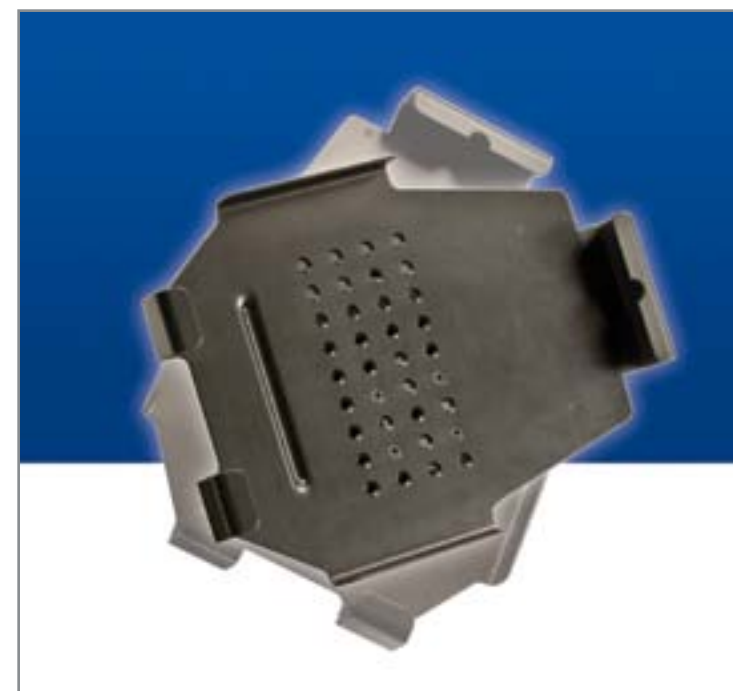
EZMount® EFB Display Unit Mounting Provisions are custom designed to integrate with specific airframe types and finished to match cockpit interiors. They are designed to pass RTCA/DO-160 qualification testing for airborne equipment and are constructed of aircraft-grade materials. Certified EZMount® EFB display unit mounting provisions are presently available for Captain and First Officer position installations on many aircraft. CarlisleIT is an industry leader in engineering design and certification expertise which translates to success of your EFB installation project.

Certification

- » Development of Qualification Test Plans and all requisite reports for certification of product design/prototyping
- » Review and approval of installation design data by in-house DERs
- » Coordination of STC data packages and application for PMA
- » Ground and Flight Test Procedures
- » Apply for and maintain STCs both domestic and foreign
- » DER, DAR, and DMIR personnel on staff

AOG (Airplane on the Ground) Support

- » 414.421.5300 (Local and international customers)
- » For after hours emergencies, follow directions on prompter



EZMount® iPad Cradle



EFB System Installation Kit Design and Certification

CarlisleIT provides complete EFB system installation design, certification and installation kits engineered to the unique requirements of the airframe type and your selected EFB system. Our design and manufacturing teams work closely together to develop high quality EFB installation products that are durable, cost-effective, and easy to install. Whether you're in the market for Class I EFB or a fully integrated Class III system, CarlisleIT EFB system installation kits are engineered to maximize your EFB system capability while significantly minimizing your overall cost of ownership in every aspect.

CarlisleIT EFB installation kits come complete with installation instructions, wire harnesses, routing hardware, mechanical assemblies, fittings, and components. Each kit is conveniently packaged and labeled for better inventory management and ease of installation helping to minimize aircraft down time. In addition to design and certification, CarlisleIT also offers build-to-print services for manufacturing from your own drawings.

EZMount® EFB Display Mounting Provisions

EZMount® EFB display mounting provisions from CarlisleIT are engineered to adapt to angles and tight constraints of the flight deck while being easily adjustable by the flight crew for enhanced operation and safety. CarlisleIT EZMount® EFB display solutions are fully RTCA/DO-160 FAA-witness tested, substantiated to 20G impulse and 9G sustained crash-loads in all directions and are life-cycle tested to meet or exceed 10 years of service unlike other certified and non-certified options in the market. EZMount® EFB mounting provisions are available in complete STC installation kits or can be purchased as individual PMA components to support owner/operator EFB STC installation projects or installation via local Field Approval efforts (Form 337).

EZMount® Tablet Cradle For Use with iPad®

CarlisleIT has developed robust EZMount® Tablet Cradles for installation of iPad® or other tablet type computing devices for use as an EFB. The cradle design supports use of protective cases such as the OtterBox® Defender Series or Gumdrop Drop Tech Series to help protect your iPad® investment. The EZMount® Tablet Cradle is compatible with any existing EZMount® EFB display unit mounting provisions and other ARINC 828 mounting hole pattern "B" applications. The EZMount® EFB solutions are not only a high quality mounting provision for the iPad® and other tablet computers, they also provide a complete mounting foundation for any EFB system display allowing future upgrades and expansion, including Class III systems.

EFB Power Solutions

CarlisleIT introduces the EZSolution™ 28V Power Panel, USB Power Port and a series of power cables that provide charging capabilities of Portable Electronic Devices (PEDs) including the iPad® and iPad® 2. CarlisleIT's 28V Power Panel, USB Power Port and power cables options deliver efficient charging without the need for bulky converters and are cost-effective, versatile and robust. The USB Power Port can be configured for removable power and mounting options allowing greater flexibility in complex installations and certification efforts. EZSolution™ power solutions can also be designed with alternate connectors and power outputs to accommodate the charging requirements for most Custom of the Shelf (COTS) PEDs via 28VDC aircraft power. CarlisleIT offers a full suite of engineering services capable of supporting any of your system installation and certification requirements.

System Wiring Provisions



EZMount® EFB Display Mounting Provisions



EZSolution™ 5V Power Cable



EZMount® Tablet Cradle



EZSolution™ USB Power Port



Regardless of your EFB system choice or aircraft type, when you partner with CarlisleIT on your EFB project, you acquire a dedicated team of Engineering Design and Certification professionals whose experience and expertise ensure the success of your EFB installation project.