

SPECIAL PURPOSE ANTENNAS

GLOBAL REACH

Our RF technology products are used around the globe with hundreds of customers



SH48-20

47 GHz – 48.5 GHz
VSWR < 1.3
Gain 20 dBi
Power (CW/Peak)
5 W / 10 W
2 x 2.40mm¹ female
Dual polarized
(LHCP/RHCP)

Applications
High Altitude Platforms
(HAP)



SCSA-27E

2 GHz – 27 GHz
VSWR < 2
Gain -3 – 6 dBi
Power (CW/Peak)
2 W / 4 W
SMA female

Applications
Measurement,
Reflector Feed,
Radio Monitoring, ...



TEMH20

1 GHz – 22 GHz
VSWR < 2.6
Gain 6 – 22 dBi
Power (CW/Peak)
25 W / 50 W
3.5mm female

Applications
Measurement,
Radio Monitoring, UWB,
...



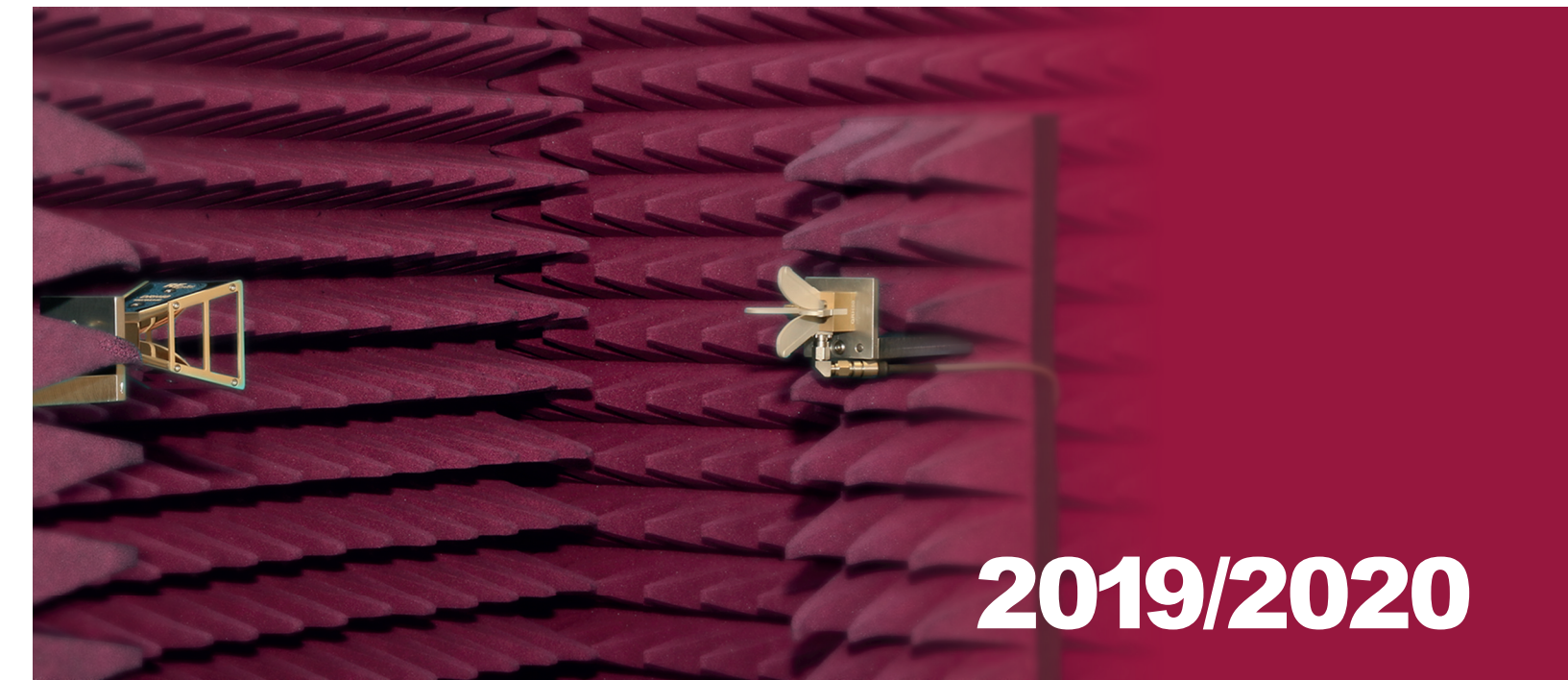
RBA-1015

10 MHz – 1.5 GHz
VSWR < 2 (freq. > 260 MHz)
Gain -20 – 4 dBi
Power (CW/Peak)
20 W / 40 W
N female

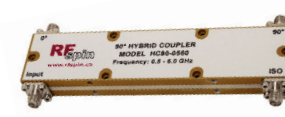
Applications
Radio Monitoring,
TEMPEST, ...



RF spin



RF COMPONENTS



90° Hybrid Couplers

Model	HC90-0560	HC90-1720	HC90-4040
Frequency Range	0.5 – 6.0 GHz	1.7 – 20 GHz	4 – 40 GHz
Connector	4x SMA female	4x SMA female	4x K female
VSWR (max)	1.25	1.4	1.6
Amplitude Balance (max)	1 dB	1 dB	1.2 dB
Phase Balance (max)	± 5 deg	± 5 deg	± 10 deg
Isolation (min)	20 dB	17 dB	15 dB
Insertion Loss (max)	1.2 dB	1.3 dB	2.4 dB

Coaxial Cables

Pair of Phase Identical Coaxial Cables	CHS-SF141-02-P	CHS-SF141-02-P	CHS-MF86-01-P
Frequency	DC – 11 GHz	DC – 20 GHz	DC – 40 GHz

Waveguide to Coax Adapters



AWC19F

40 GHz – 60 GHz
VSWR < 1.35
WR19
UG-383/U-Mod
1.85mm female



AWC15F

50 GHz – 67 GHz
VSWR < 1.4
WR15
UG-385/U
1.85mm female

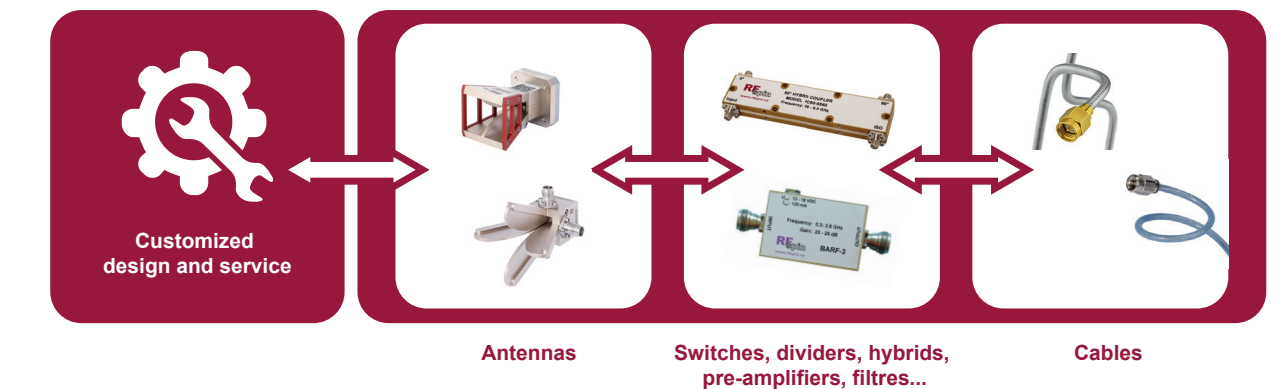
VESTUR a u s t u r



Vestur Austur s.r.o.

U průhonu 827/5, Holešovice, 170 00 Praha 7
IČO: 08137072
Spisová značka: C 313600 vedená u Městského soudu v Praze

MORE THAN JUST ANTENNAS



www.rfspin.com

MEASUREMENT ANTENNAS

DUAL POLARIZED ANTENNAS

DOUBLE RIDGED HORN ANTENNA / WAVEGUIDE ADAPTER



DRH200

180 MHz – 2.2 GHz
VSWR < 1.6
Gain 6 – 14 dBi
Power (CW/Peak)
500 W / 1000 W
N female

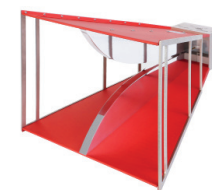
Applications
EMC, Automotive, Radio
Monitoring, Electronics,
Government/Defense,
Medical, ...



DRH203

200 MHz – 3 GHz
VSWR < 1.6
Gain 3 – 16 dBi
Power (CW/Peak)
400 W / 750 W
N female

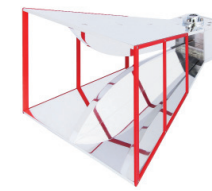
Applications
EMC, Automotive, Radio
Monitoring, Electronics,
Government/Defense,
Medical, ...



DRH370

370 MHz – 6 GHz
VSWR < 1.6
Gain 3 – 16 dBi
Power (CW/Peak)
350 W / 500 W
N female

Applications
EMC, Automotive, Radio
Monitoring, Electronics,
Government/Defense,
Medical, ...



DRH10

740 MHz – 10.5 GHz
VSWR < 1.8
Gain 4 – 17 dBi
Power (CW/Peak)
150 W / 250 W
N female

Applications
WiMAX Testing, UWB,
GSM, PCS, Wi-Fi, EMC,
Automotive, Electronics,
Government/Defense,
Medical, ...



QRH300

300 MHz – 4.5 GHz
VSWR < 2.2
Gain 4 – 15 dBi
Power (CW/Peak)
400 W / 750 W
2 × N female

Applications
EMC, Automotive, Radio
Monitoring, Electronics,
Government/Defense,
Medical, ...



QRH400

400 MHz – 6 GHz
VSWR < 2.3
Gain 4 – 15 dBi
Power (CW/Peak)
300 W / 500 W
2 × N female

Applications
EMC, Automotive, Radio
Monitoring, Electronics,
Government/Defense,
Medical, ...



QRH11

730 MHz – 11 GHz
VSWR < 2.4
Gain 3.5 – 15.5 dBi
Power (CW/Peak)
100 W / 170 W
2 × SMA female

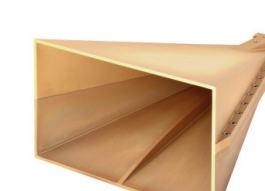
Applications
WiMAX Testing, UWB, GSM,
PCS, Wi-Fi, EMC, Automotive,
Radio Monitoring, Electronics,
Government/Defense, Medical,
...



QRH18

1 GHz – 18 GHz
VSWR < 2.5
Gain 5 – 16 dBi
Power (CW/Peak)
100 W / 170 W
2 × SMA female

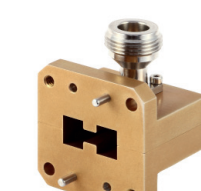
Applications
WiMAX Testing, UWB, GSM,
PCS, Wi-Fi, EMC, Automotive,
Radio Monitoring, Electronics,
Government/Defense, Medical,
...



DRH818

7.5 GHz – 18 GHz
VSWR < 1.18
WRD750
FPWRD750D24
Gain 19 – 21 dBi
Power (CW/Peak)
1000 W / 2500 W

Applications – EMC, Automotive, Radio Monitoring, Measurement, Electronics, Government/Defense, ...



ADRWC750

7.5 GHz – 18 GHz
VSWR < 1.25
N / SMA female
WRD750
FPWRD750D24
100 W / 170 W

PYRAMIDAL HORN ANTENNAS



DRH18-EX

800 MHz – 18 GHz
VSWR < 2.4
Gain 4 – 15 dBi
Power (CW/Peak)
100 W / 170 W
SMA female

Applications
EMC, Automotive, Radio
Monitoring, Electronics,
Government/Defense,
Medical, ...



DRH20

1.7 GHz – 20 GHz
VSWR < 1.6
Gain 5 – 16 dBi
Power (CW/Peak)
50 W / 100 W
SMA female

Applications
EMC, Automotive, Radio
Monitoring, Electronics,
Government/Defense,
Medical, ...



DRH40

4 GHz – 40 GHz
VSWR < 1.6
Gain 7 – 19 dBi
Power (CW/Peak)
15 W / 30 W
K female

Applications
EMC, Automotive, Radio
Monitoring, Electronics,
Government/Defense,
Medical, ...



DRH50

4.5 GHz – 50 GHz
VSWR < 1.55
Gain 6 – 20.5 dBi
Power (CW/Peak)
10 W / 20 W
2.40 mm female

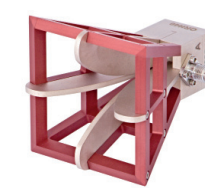
Applications
EMC, Automotive, Radio
Monitoring, Electronics,
Government/Defense,
Medical, **5G**, ...



QRH20E

1.7 GHz – 20 GHz
VSWR < 2.2
Gain 6 – 15.5 dBi
Power (CW/Peak)
20 W / 40 W
2 × SMA female

Applications
EMC, Automotive, Radio
Monitoring, Electronics,
Government/Defense,
Medical, ...



QRH40

4 GHz – 40 GHz
VSWR < 2.4
Gain 6 – 16 dBi
Power (CW/Peak)
10 W / 20 W
2 × K female

Applications
EMC, Automotive, Radio
Monitoring, Electronics,
Government/Defense,
Medical, ...



QRH50

5 GHz – 50 GHz
VSWR < 2.5
Gain 4 – 14 dBi
Power (CW/Peak)
5 W / 10 W
2 × 2.40mm female

Applications
EMC, Automotive, Radio
Monitoring, Electronics,
Government/Defense,
Medical, **5G**, ...



H-A40

26 GHz – 40 GHz
VSWR < 1.35
Gain 18 – 21 dBi
HPBW 14° – 19°
Power (CW/Peak)
15 W / 30 W
K female



H-A50

33 GHz – 50 GHz
VSWR < 1.35
Gain 18 – 21 dBi
HPBW 14° – 19°
Power (CW/Peak)
10 W / 20 W
2.40mm female



H-A60-W

40 GHz – 60 GHz
VSWR < 1.15
Gain 19 – 21 dBi
HPBW 14° – 19°
WR-19, UG-383/U flange



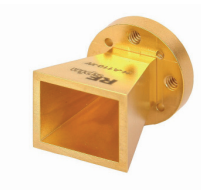
H-A75-W

50 GHz – 75 GHz
VSWR < 1.15
Gain 19 – 21 dBi
HPBW 14° – 19°
WR-15, UG-385/U flange



H-A90-W

60 GHz – 90 GHz
VSWR < 1.15
Gain 19 – 21 dBi
HPBW 14° – 19°
WR-12, UG-387/U flange



H-A110-W

75 GHz – 110 GHz
VSWR < 1.18
Gain 19 – 21 dBi
HPBW 14° – 19°
WR-10, UG-387/U flange



DRH67

6 GHz – 67 GHz
VSWR < 1.9
Gain 6.5 – 21.5 dBi
Power (CW/Peak)
5 W / 10 W
1.85mm female



DRH110

14 GHz – 110 GHz
VSWR < 2.1
Gain 6.5 – 18.5 dBi
Power (CW/Peak)
4 W / 8 W
1.0 mm female



DLPP-6

500 MHz – 6 GHz
VSWR < 2.5
Gain 4 – 8 dBi
Power (CW/Peak)
20 W / 40 W
2 × SMA female

Applications
WiMAX Testing, UWB, GSM,
PCS, Wi-Fi, EMC, Automotive,
Radio Monitoring, Electronics,
Government/Defense, Medical, ...



H-A90-W25

60 GHz – 90 GHz
VSWR < 1.15
Gain 24 – 26 dBi
HPBW 7° – 12°
WR-12, UG-387/U flange



H-A110-W25

75 GHz – 110 GHz
VSWR < 1.16
Gain 24 – 26 dBi
HPBW 7° – 12°
WR-10, UG-387/U flange

Applications – **5G**, Radio Monitoring, Electronics, Government/Defense, Automotive, ...