

SCI MINI-MIL

Double-Start Receptacle

- Square Flange Mount
- Jam Nut Mount
- Right Angle Jam Nut Mount

Triple-Start Receptacle

- Square Flange Mount
- Jam Nut Mount

Double-Start Square Flange and Jam Nut Mount Receptacle

Contact Type: Pin or Socket

Termination Type: Crimp Removable, PCB*, & Solder Cup*

Shell Size

5	6	7	8	9	10
5-3	6-1	7-1	8-2	9-4	10-2
	6-23	7-25	8-200	9-200	10-5
Insert Arr.	6-4	7-10	8-28	9-201	10-201
	6-6		8-13	9-210	10-202
	6-7			9-19	10-200
					10-26

Double-Start Right Angle PCB Jam Nut Mount Receptacle

Contact Type: Pin or Socket

Termination Type: Right Angle PCB

Shell Size

5	6	7	8	9
5-3	6-4	7-10	8-13	9-19
Insert Arr.	6-7			

Triple-Start Square Flange and Jam Nut Mount Receptacle

Contact Type: Pin or Socket

Termination Type: Crimp Removable, PCB*, & Solder Cup*

Shell Size

8	9	10
8-1	9-1	10-2
8-23	9-25	10-200
Insert Arr.	8-4	9-10
	8-6	10-13
	8-7	

*Non-removable contacts

Materials and Finishes

Alternate Materials and Finishes Available Upon Request

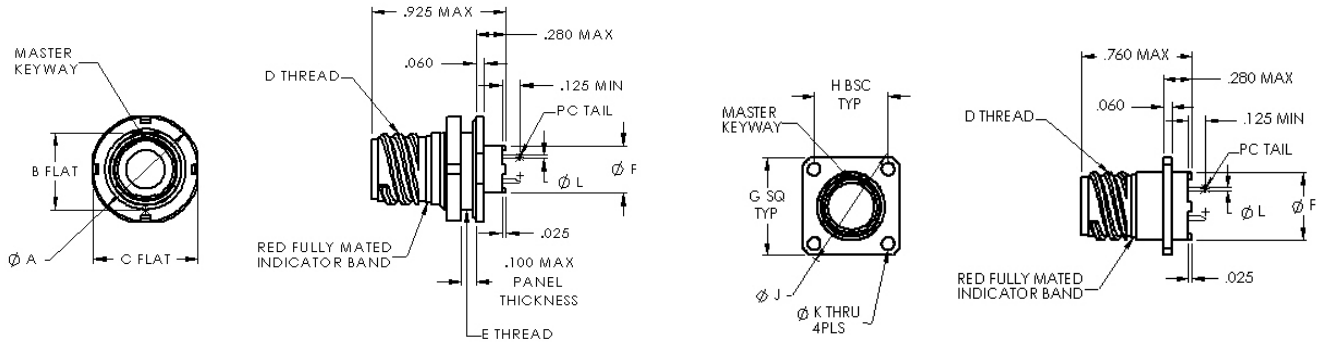
Material	Finish	Hrs. Salt Spray	RoHS Compliance
Aluminum	Electroless-Nickel	48	Y
Aluminum	Nickel-PTFE	500	Y
Aluminum	Cadmium, Olive Drab	500	N
Stainless Steel	Electrodeposited Nickel	500	Y
Stainless Steel	Passivated	1000	Y
Stainless Steel	Nickel-PTFE	1000	Y

Torque Values

Shell Size		Coupling Torque		Jam Nut Torque	
		(in-lb)		(in-lb, recommended)	
Double-Start	Triple-Start	Min.	Max.	Min.	Max.
5	-	25	35	20	25
6	8	35	40	20	25
7	9	35	40	20	25
8	10	40	50	20	25
9	-	40	50	20	25
10	-	50	60	25	30

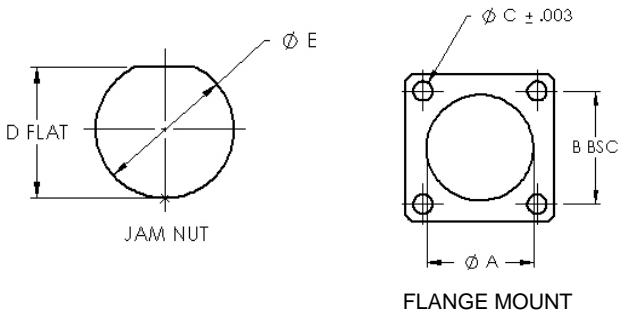
Double Start

Solder Cup & PCB Flange Mount & Jam Nut Receptacles



Shell				Double Thread	E Thread						
Size	A Ø	B Flat	C Flat	D Thread	UN-2A	F Ø	G sq.	H	J Ø	K Ø	± .003
5	0.575	0.350	0.545	.3125-.05P-.1L-2A	.3750-28	0.244	0.530	0.363	0.680	0.093	
6	0.635	0.410	0.595	.375-.05P-.1L-2A	.4375-28	0.330	0.590	0.423	0.750	0.093	
7	0.755	0.536	0.723	.4375-.05P-.1L-2A	.5625-32	0.432	0.650	0.483	0.850	0.093	
8	0.755	0.563	0.723	.5000-.05P-.1L-2A	.5625-32	0.493	0.712	0.545	0.938	0.093	
9	0.830	0.596	0.790	.5625-.05P-.1L-2A	.6250-28	0.551	0.850	0.607	1.125	0.128	
10	0.890	0.658	0.855	.6250-.05P-.1L-2A	.6875-28	0.620	0.890	0.670	1.188	0.128	

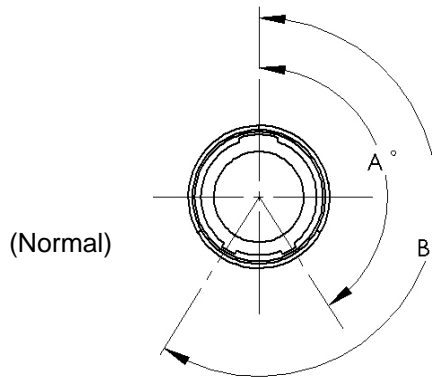
Panel Cut Out



Shell Size	Flange Mount			Jam Nut	
	A Ø	B Ø	C Ø	D Flat ± .002	E Ø ± .002
5	0.330	0.363	0.093	0.356	0.385
6	0.390	0.423	0.093	0.416	0.447
7	0.450	0.483	0.093	0.542	0.572
8	0.510	0.545	0.093	0.542	0.572
9	0.575	0.607	0.128	0.602	0.635
10	0.640	0.670	0.128	0.666	0.697

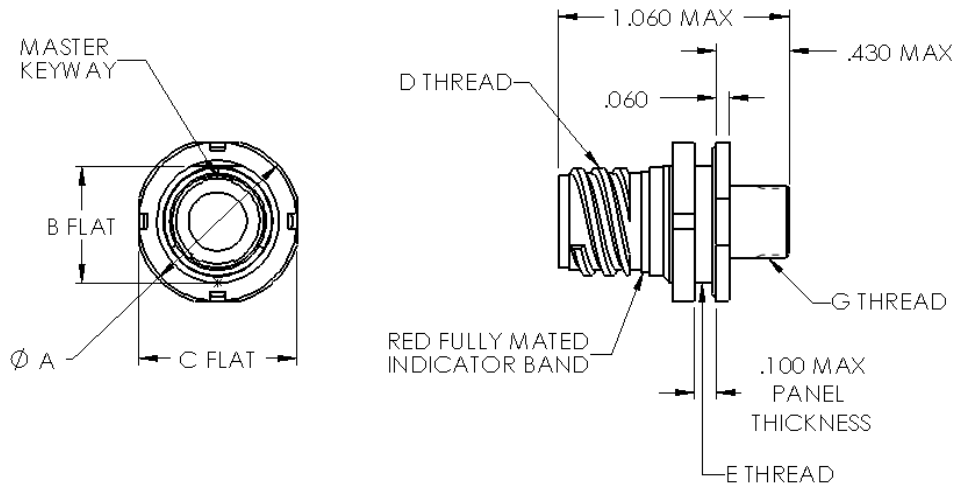
Double Start Keying Positions

Key Positions	Rotations	
	A	B
A	150°	210°
B	75°	210°
C	95°	230°
D	140°	275°
E	75°	275°
F	95°	210°



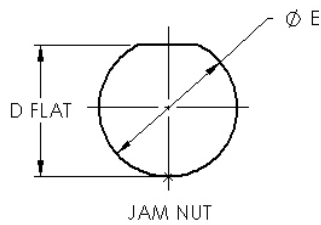
Double Start

Crimp Removable Jam Nut



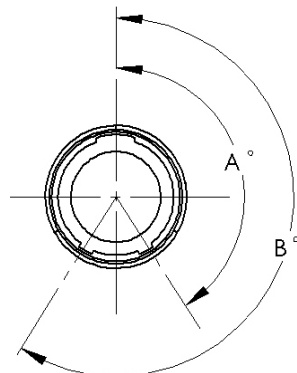
Shell					E Thread	G Thread
Size	A Ø	B Flat	C Flat	D Thread	UN-2A	UN-2A
5	0.575	0.350	0.545	.3125-.05P-.1L-2A	.3750-28	.250-32
6	0.635	0.410	0.595	.375-.05P-.1L-2A	.4375-28	.3125-32
7	0.755	0.536	0.723	.4375-.05P-.1L-2A	.5625-32	.4375-28
8	0.755	0.536	0.723	.5000-.05P-.1L-2A	.5625-32	.5000-28
9	0.830	0.596	0.790	.5625-.05P-.1L-2A	.6250-28	.5625-24
10	0.890	0.658	0.855	.6250-.05P-.1L-2A	.6875-28	.6250-24

Panel Cut Out



Shell Size	D Flat	E Ø
	± .002	± .002
5	0.356	0.385
6	0.416	0.447
7	0.542	0.572
8	0.542	0.572
9	0.602	0.635
10	0.666	0.697

Double Start Keying Positions

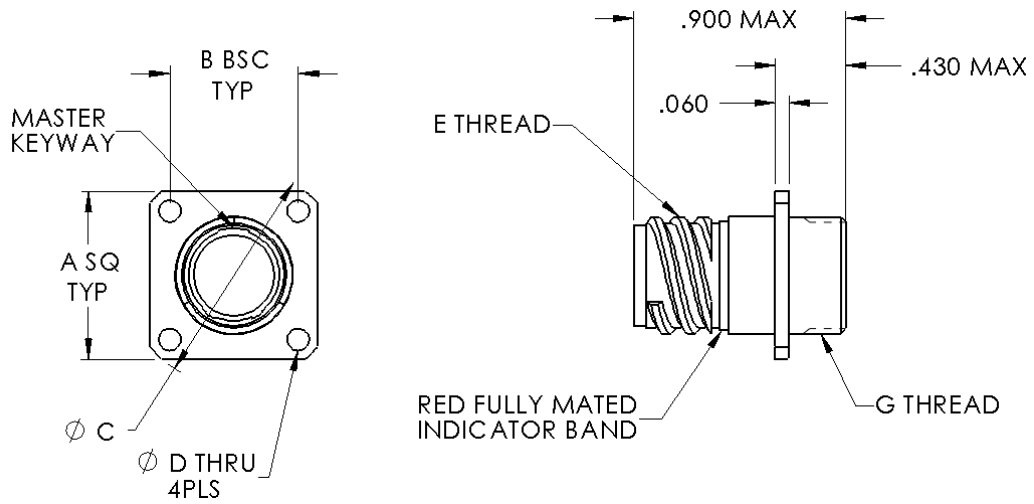


Key Positions	Rotations	
	A	B
A	150°	210°
B	75°	210°
C	95°	230°
D	140°	275°
E	75°	275°
F	95°	210°

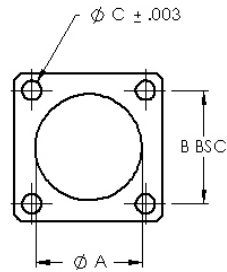
(Normal)

Double Start

Crimp Removable – Square Flange Mount



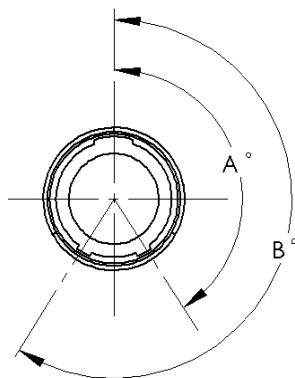
Shell Size	A	B BSC	ϕ C	D ϕ	E Thread	G Thread
5	0.530	0.363	0.680	0.093	.3125-.05P-.1L-2A	.250-32
6	0.590	0.423	0.750	0.093	.375-.05P-.1L-2A	.3125-32
7	0.650	0.483	0.850	0.093	.4375-.05P-.1L-2A	.4375-28
8	0.712	0.545	0.938	0.093	.5000-.05P-.1L-2A	.5000-28
9	0.850	0.607	1.125	0.128	.5625-.05P-.1L-2A	.5625-24
10	0.890	0.670	1.188	0.128	.6250-.05P-.1L-2A	.6250-24



Panel Cut Out

Flange Mount

Shell Size	A ϕ	B BSC	C ϕ
5	0.330	0.363	0.093
6	0.390	0.423	0.093
7	0.450	0.483	0.093
8	0.510	0.545	0.093
9	0.575	0.607	0.128
10	0.640	0.670	0.128



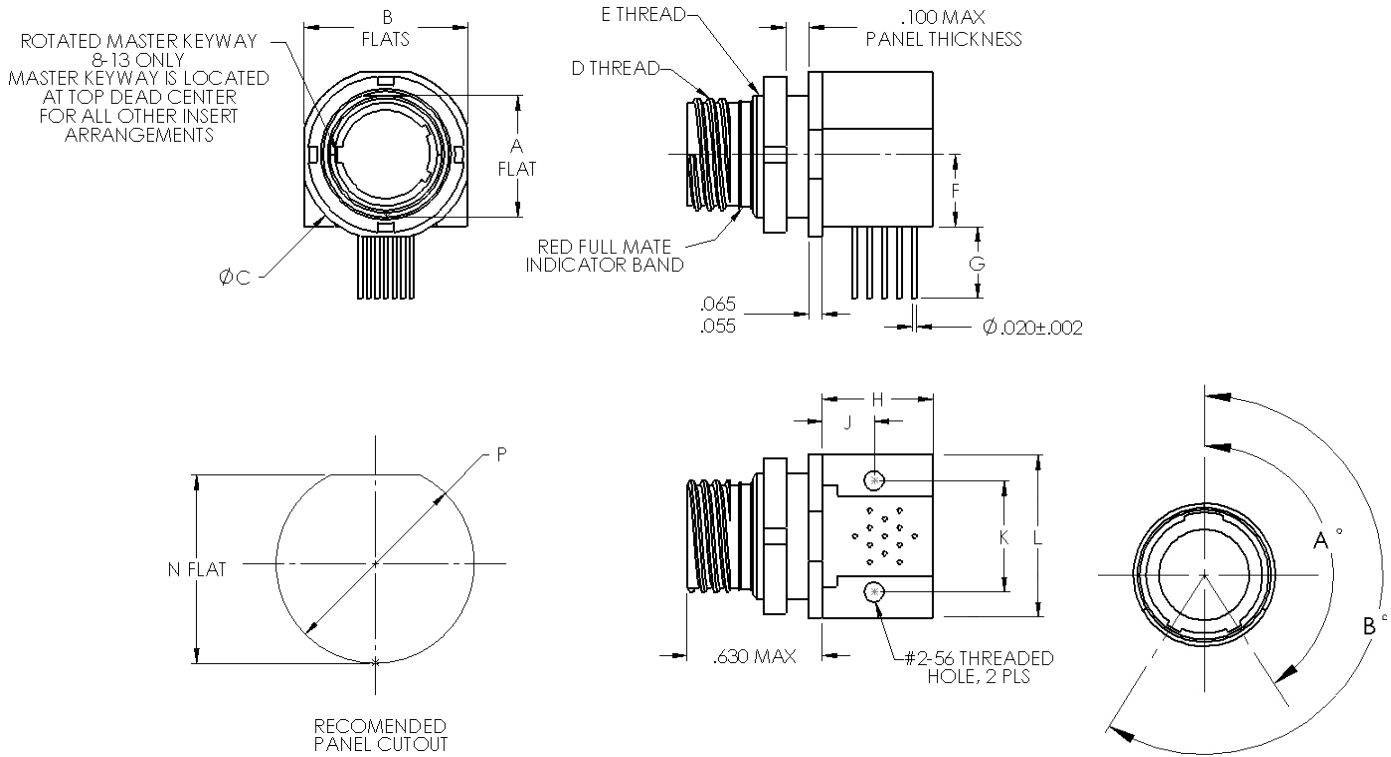
Double Start Keying Positions

Key Positions	Rotations	
	A	B
A	150°	210°
B	75°	210°
C	95°	230°
D	140°	275°
E	75°	275°
F	95°	210°

(Normal)

Right Angle PCB

Double Start Threads Jam Nut Receptacles



Shell	A	B	C	D Thread	E Thread	F	G
5-3	0.350	0.545	0.580	.3125-.05P-.1L-DS-2A	.375-28 UN-2A	0.225	0.275
6-4	0.410	0.602	0.635	.3750-.05P-.1L-DS-2A	.4375-28 UNEF-2A	0.225	0.292
6-7	0.410	0.602	0.635	.3750-.05P-.1L-DS-2A	.4375-28 UNEF-2A	0.225	0.265
7-10	0.536	0.723	0.755	.4375-.05P-.1L-DS-2A	.5625-32 UN-2A	0.296	0.273
8-13	0.536	0.723	0.755	.5000-.05P-.1L-DS-2A	.5625-32 UN-2A	0.319	0.316
9-19	0.595	0.790	0.830	.5625-.05P-.1L-DS-2A	.6250-28 UN-2A	0.360	0.275

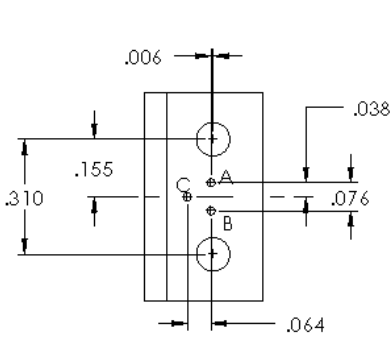
Shell	H	J	K	L	N	P
5-3	0.260	0.165	0.310	.480	0.357	0.385
6-4	0.345	0.224	0.385	.589	0.418	0.448
6-7	0.345	0.187	0.408	.589	0.418	0.448
7-10	0.345	0.170	0.452	.710	0.544	0.573
8-13	0.490	0.230	0.490	.710	0.544	0.573
9-19	0.490	0.342	0.600	.800	0.603	0.635

Double Start Keying Positions

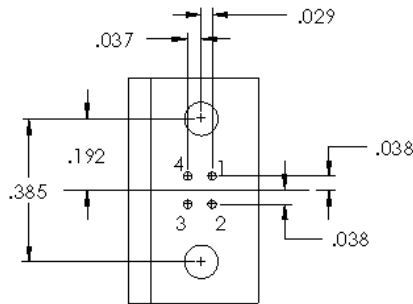
Key Positions	Rotations		(Normal)
	A	B	
A	150°	210°	
B	75°	210°	
C	95°	230°	
D	140°	275°	
E	75°	275°	
F	95°	210°	

Right Angle PCB Footprints Pin Connectors

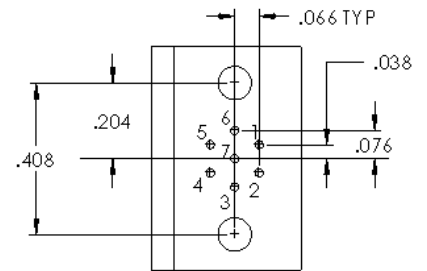
Footprints shown are for the component mounting side of PCB.



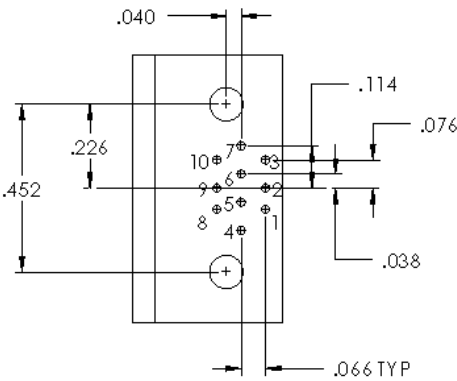
5-3 P
3 #23 Contacts



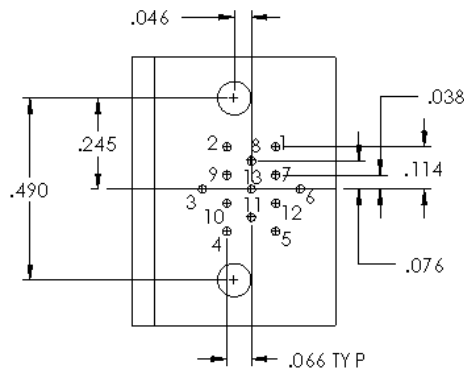
6-4 P
6 #23 Contacts



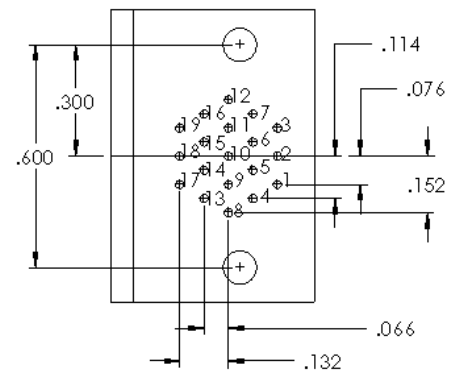
6-7 P
7 #23 Contacts



7-10 P
10 #23 Contacts



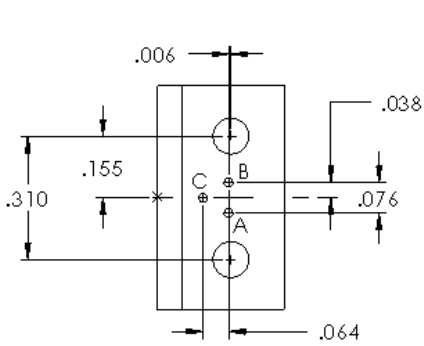
8-13 P
13 #23 Contacts



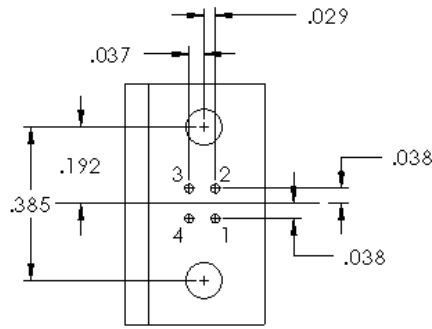
9-19 P
19 #23 Contacts

Right Angle PCB Footprints Socket Connectors

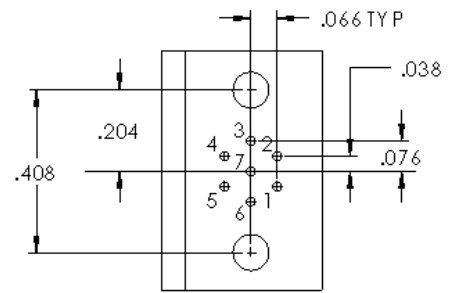
Footprints shown are for the component mounting side of PCB.



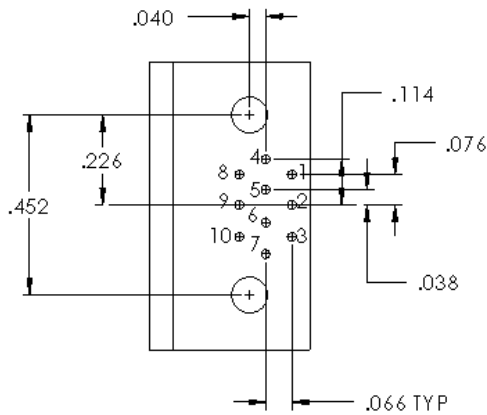
5-3 S
3 #23 Sockets



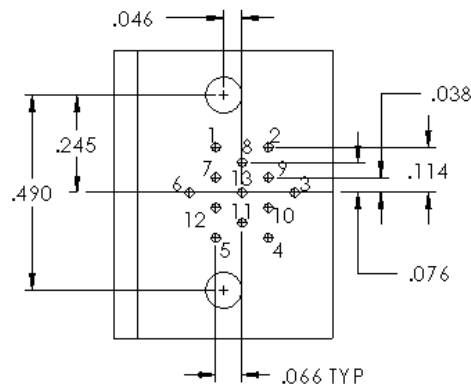
6-4 S
4 #23 Sockets



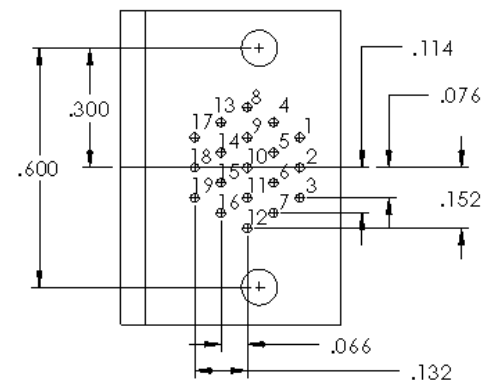
6-7 S
7 #23 Sockets



7-10 S
10 #23 Sockets



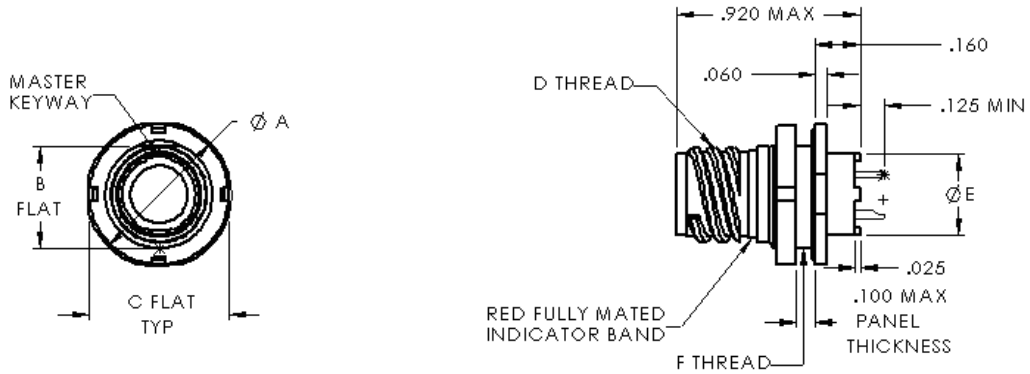
8-13 S
13 #23 Sockets



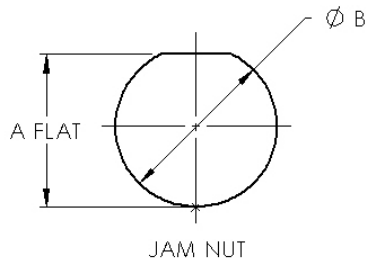
9-19 S
13 #23 Sockets

Triple Start

Solder Cup & PCB Jam Nut Receptacles

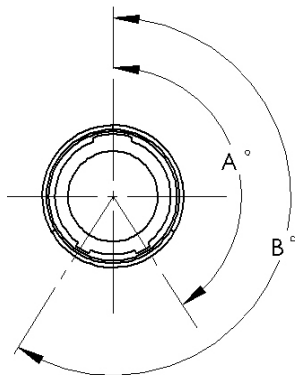


Shell						
Size	Ø A	B	C	D Thread	Ø E	F Thread
8	0.760	0.535	0.730	.5000-.1P-.3L-TS-2A	0.330	.5625-28 UNEF-2A
9	0.880	0.661	0.850	.5625-.1P-.3L-TS-2A	0.432	.6875-28 UN-2A
10	0.880	0.661	0.850	.6250-.1P-.3L-TS-2A	0.493	.6875-28 UN-2A



Panel Cutout

Shell	A Flat	Ø B
Size	± 0.002	± 0.005
8	0.543	0.572
9	0.669	0.698
10	0.669	0.698



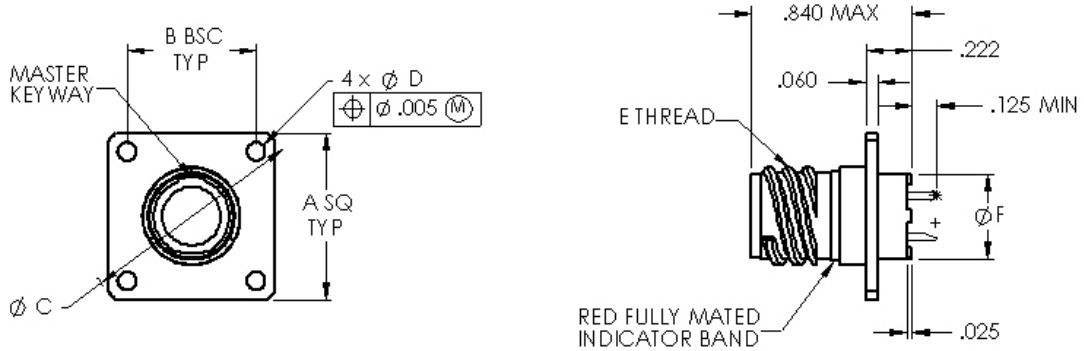
Triple Start Keying Positions

Key Positions	Rotations	
	A	B
A	150°	210°
B	75°	210°
C	95°	230°
D	140°	275°

(Normal)

Triple Start

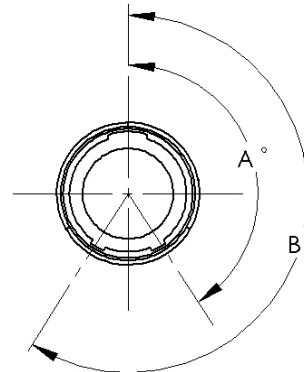
Solder Cup & PCB Flange Mount Receptacles



Shell						
Size	Ø A	B	C	Ø D	E Thread	Ø F
8	0.850	0.660	1.150	0.094	.5000-.1PL-.3L-TS-2A	0.330
9	0.913	0.723	1.230	0.094	.5625-.1P-.3L-TS-2A	0.432
10	0.975	0.785	1.330	0.094	.6250-.1P-.3L-TS-2A	0.493

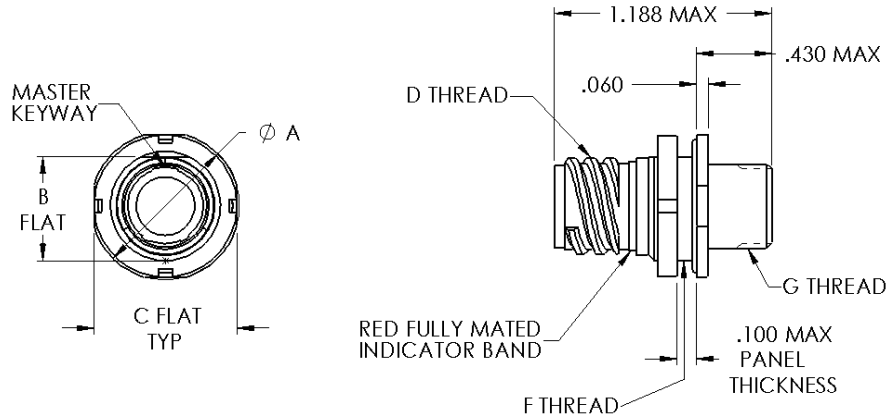
Triple Start Keying Positions

Key Positions	Rotations		(Normal)
	A	B	
A	150°	210°	
B	75°	210°	
C	95°	230°	
D	140°	275°	

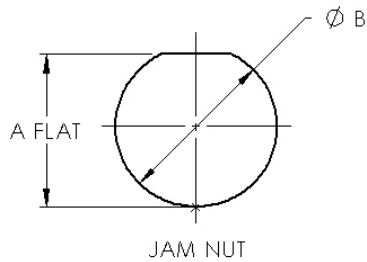


Triple Start

Crimp Removable Jam Nut Receptacles

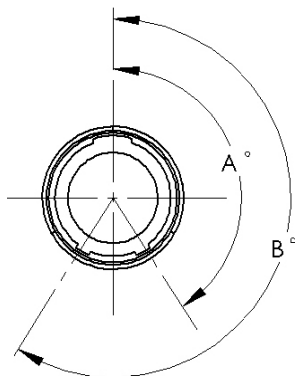


Shell	Ø A	B	C	D Thread	F Thread	G Thread
8	0.760	0.535	0.730	.5000-.1P-.3L-TS-2A	.5625-28 UNEF-2A	.3750-32 UNEF-2A
9	0.880	0.661	0.850	.5625-.1P-.3L-TS-2A	.6875-28 UN-2A	.4375-28 UNEF-2A
10	0.880	0.661	0.850	.6250-.1P-.3L-TS-2A	.6875-28 UN-2A	.5000-28 UNEF-2A



Panel Cutout

Shell	A Flat	Ø B
Size	± 0.002	± 0.005
8	0.543	0.572
9	0.669	0.698
10	0.669	0.698



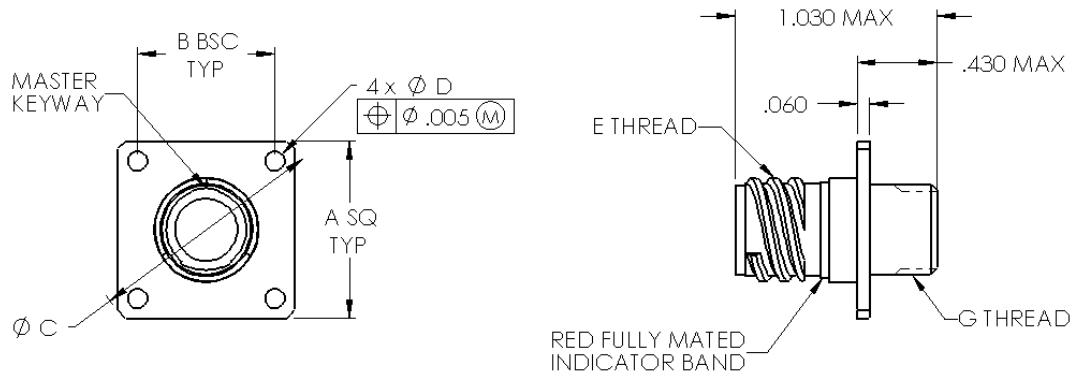
Triple Start Keying Positions

Key Positions	Rotations	
	A	B
A	150°	210°
B	75°	210°
C	95°	230°
D	140°	275°

(Normal)

Triple Start

Crimp Removable Square Flange Mount Receptacles

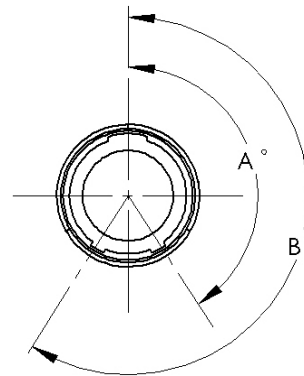


Shell						
Size	Ø A	B	C	Ø D	E Thread	G Thread
8	0.850	0.660	1.150	0.094	.5000-.1PL-.3L-TS-2A	.3750-32 UNEF-2A
9	0.913	0.723	1.230	0.094	.5625-.1P-.3L-TS-2A	.4375-28 UNEF-2A
10	0.975	0.785	1.330	0.094	.6250-.1P-.3L-TS-2A	.5000-28 UNEF-2A

Triple Start Keying Positions

Key Positions	Rotations	
	A	B
A	150°	210°
B	75°	210°
C	95°	230°
D	140°	275°

(Normal)



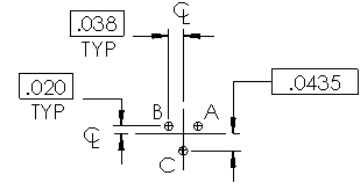
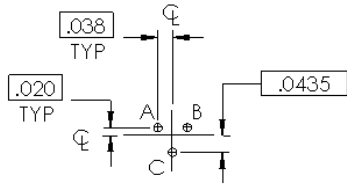
MINI-MIL PCB Footprints

Component Mounting Side of PCB

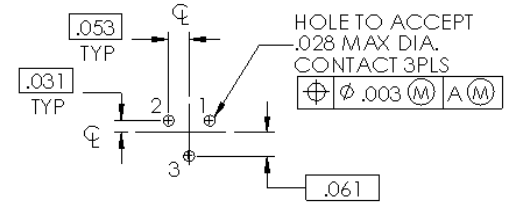
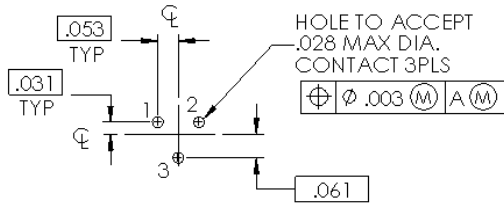
Pin Connector

Socket Connector

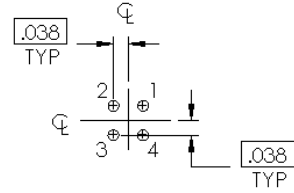
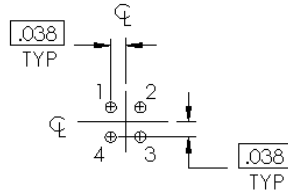
5-3
3 #23 Contacts



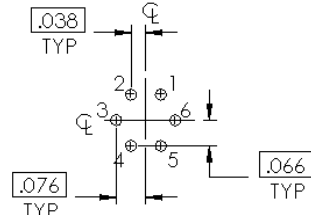
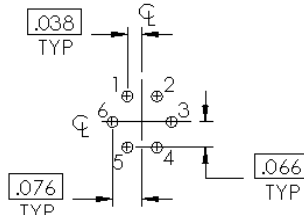
6-23, 8-23
3 #20HD Contacts



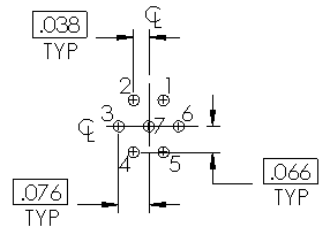
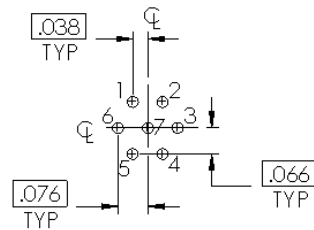
6-4, 8-4
4 #23 Contacts



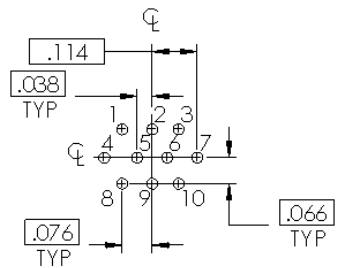
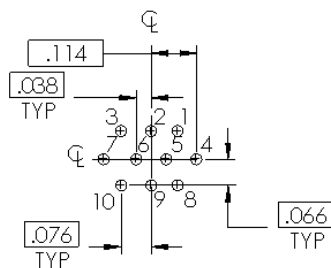
6-6, 8-6
6 #23 Contacts



6-7, 8-7
7 #23 Contacts



7-10, 9-10
10 #23 Contacts



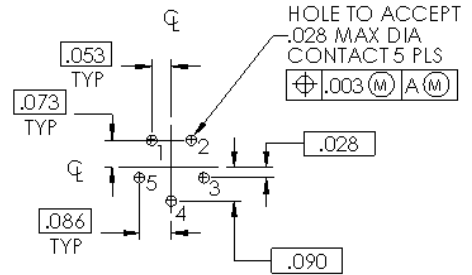
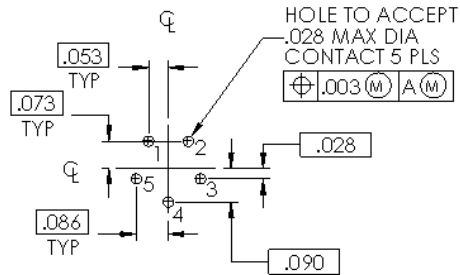
MINI-MIL PCB Footprints

Component Mounting Side of PCB

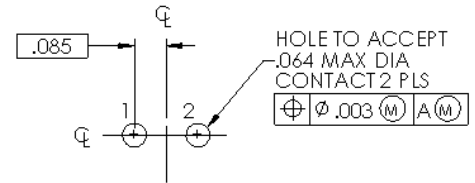
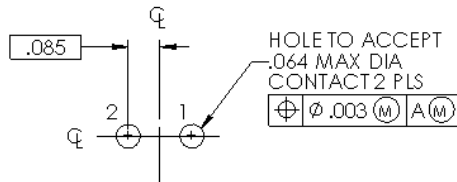
Pin Connector

Socket Connector

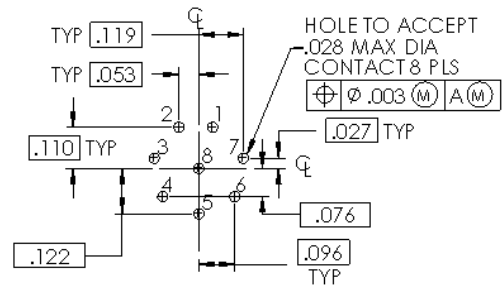
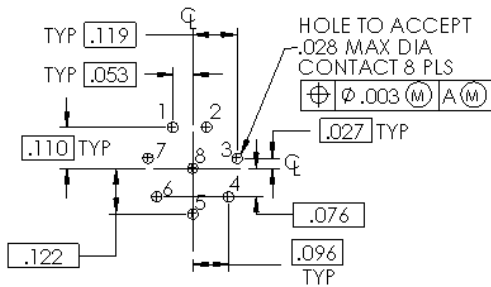
7-25, 9-25
5 #20HD Contacts



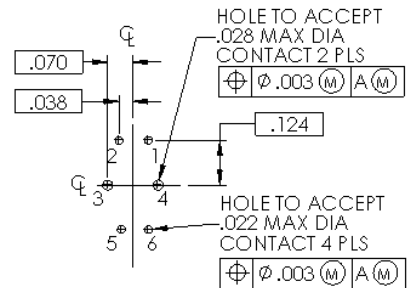
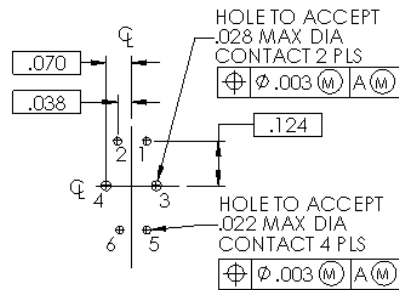
8-2, 10-2
2 #16 Contacts



8-28, 10-28
8 #20 Contacts



8-200, 10-200
2 #20 Contacts
4 #23 Contacts



MINI-MIL PCB Footprints

Component Mounting Side of PCB

Pin Connector

Socket Connector

8-13, 10-13
13 #23 Contacts

